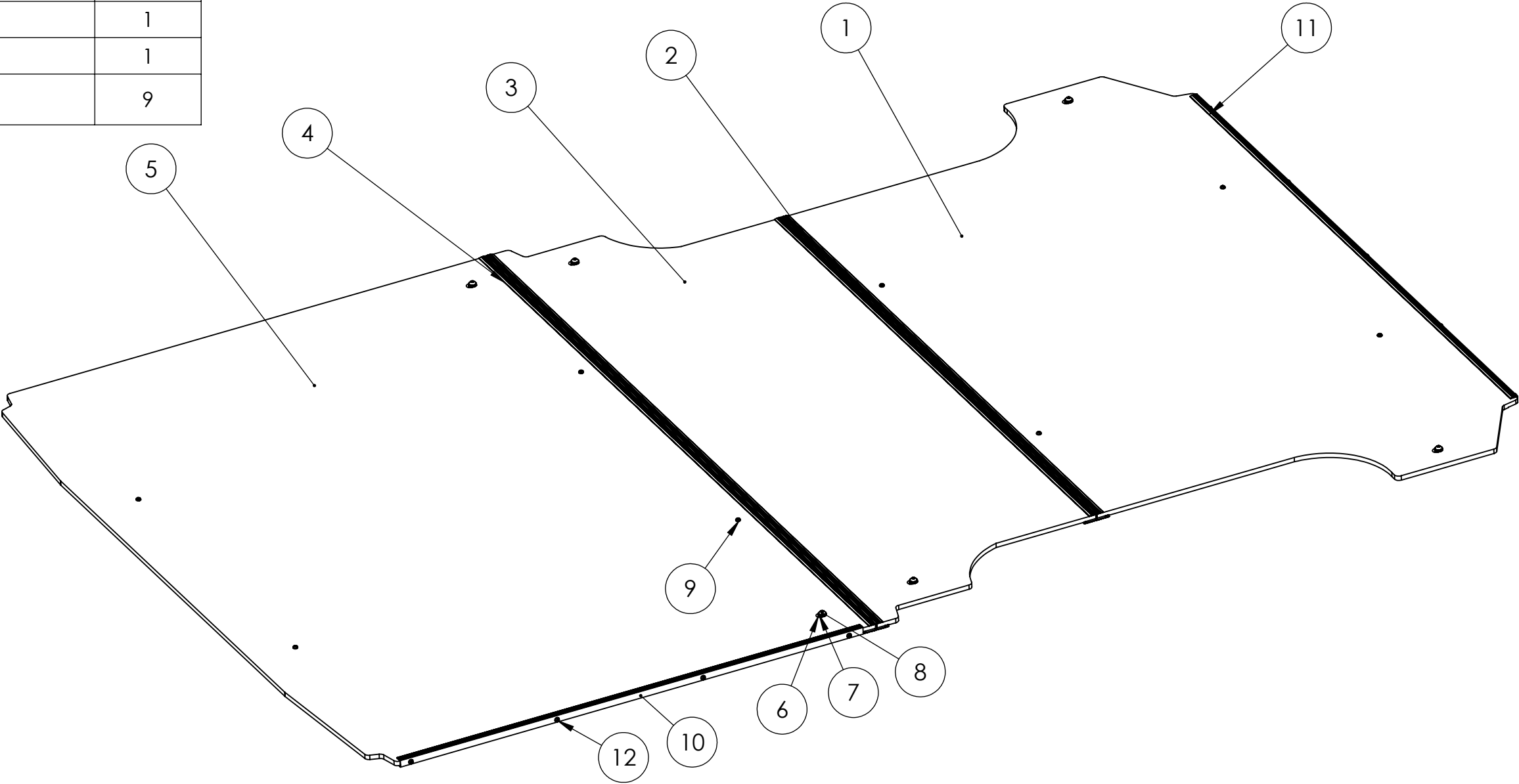
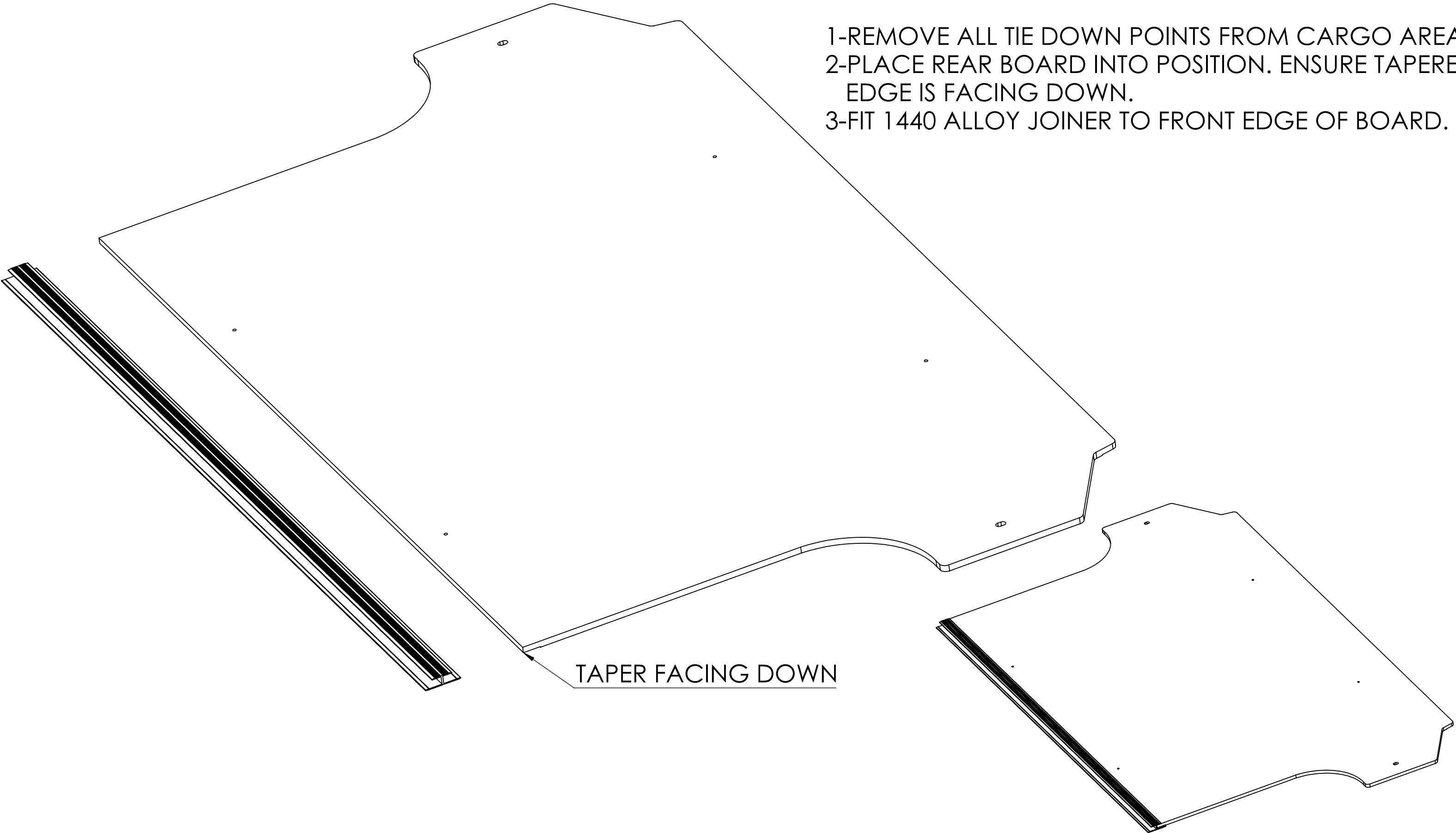


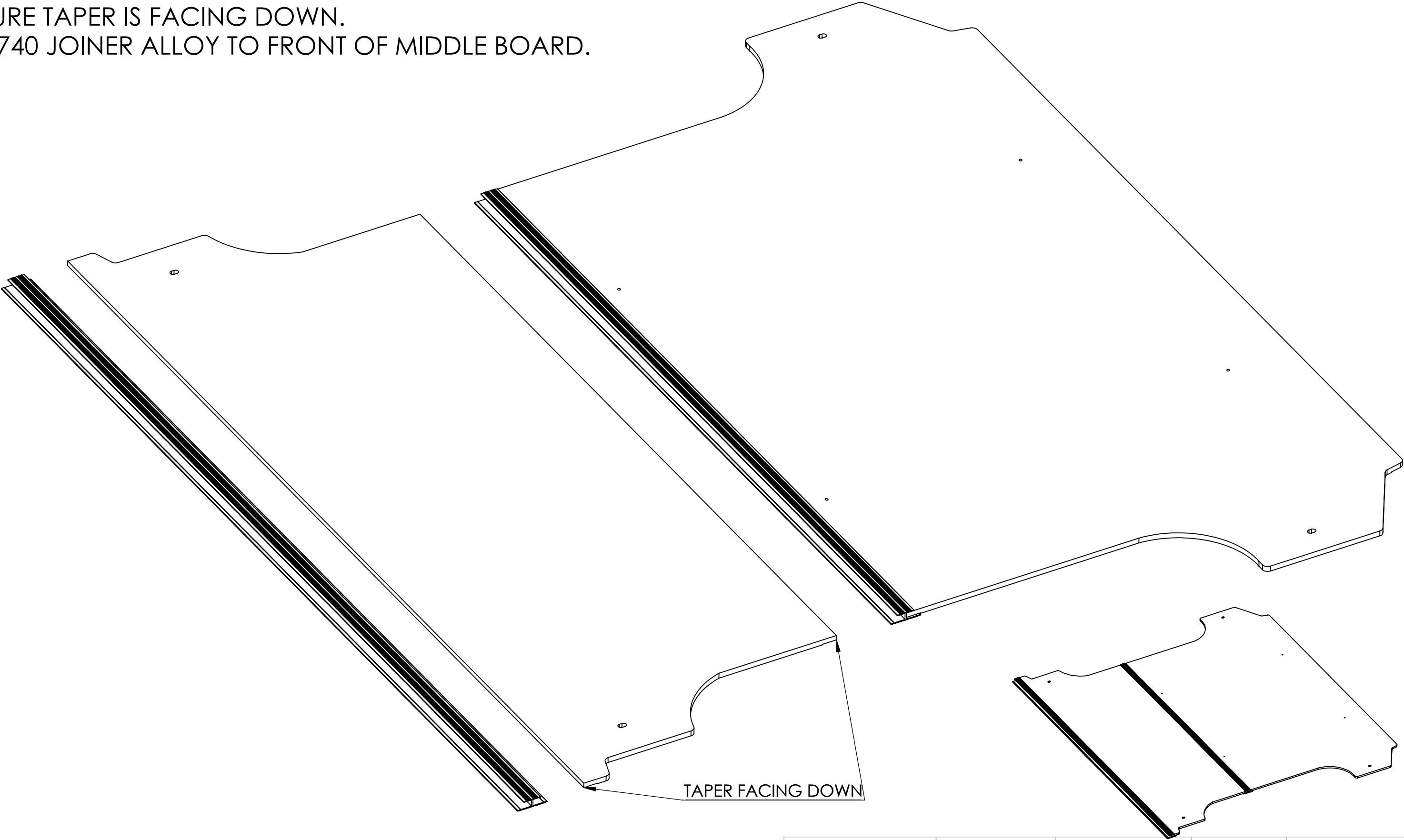
ITEM NO.	PART NUMBER	QTY.
1	PTKTFMSSF18-001	1
2	1404 JOINER FLOOR ALLOY	1
3	PTKTFMSSF18-002	1
4	1740 JOINER FLOOR ALLOY	1
5	PTKTFMSSF18-003	1
6	16X25MM SPACER	6
7	M8 WASHER MEDIUM	6
8	M8X 60 DOME HEAD BOLT	6
9	SCREW #8g 16X32	8
10	1045 CAP ALLOY	1
11	1430 CAP ALLOY	1
12	SCREW #10G X 1/2	9

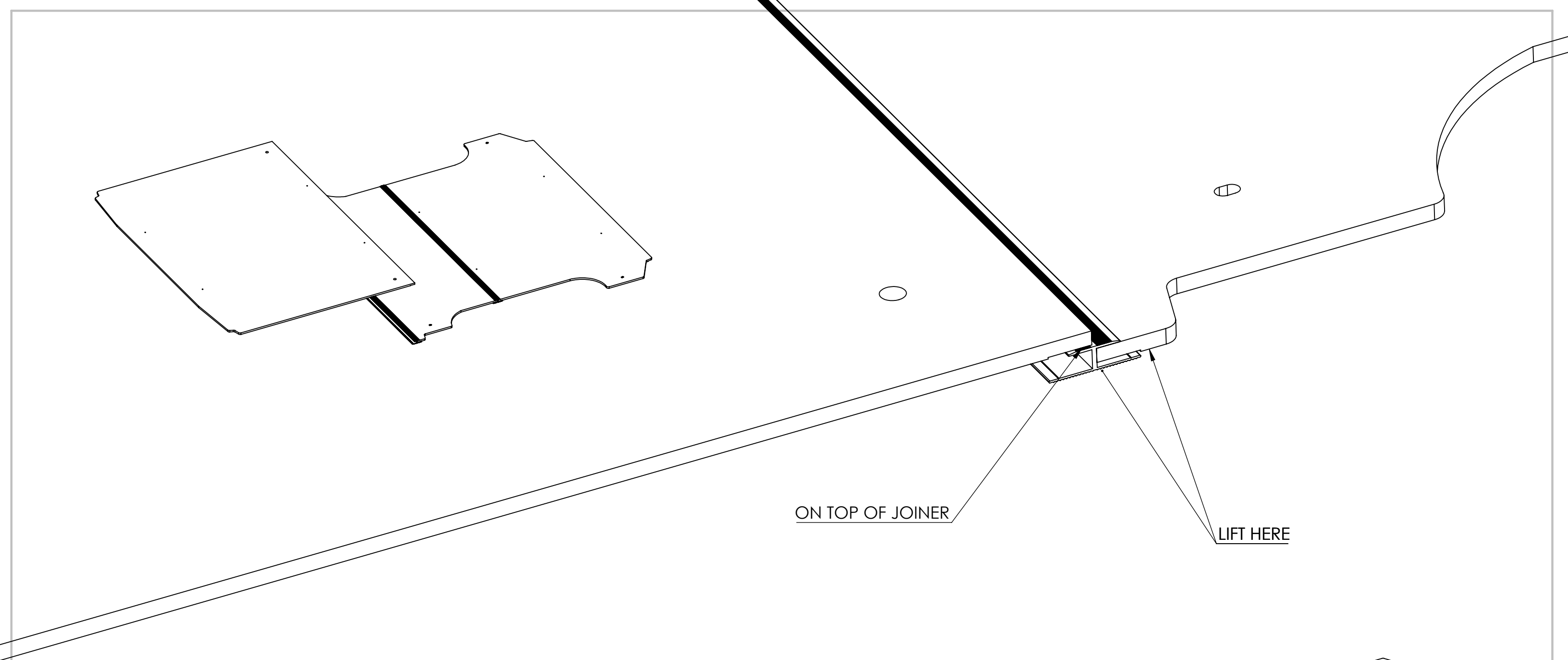


- 1-REMOVE ALL TIE DOWN POINTS FROM CARGO AREA.
2-PLACE REAR BOARD INTO POSITION. ENSURE TAPERED
EDGE IS FACING DOWN.
3-FIT 1440 ALLOY JOINER TO FRONT EDGE OF BOARD.

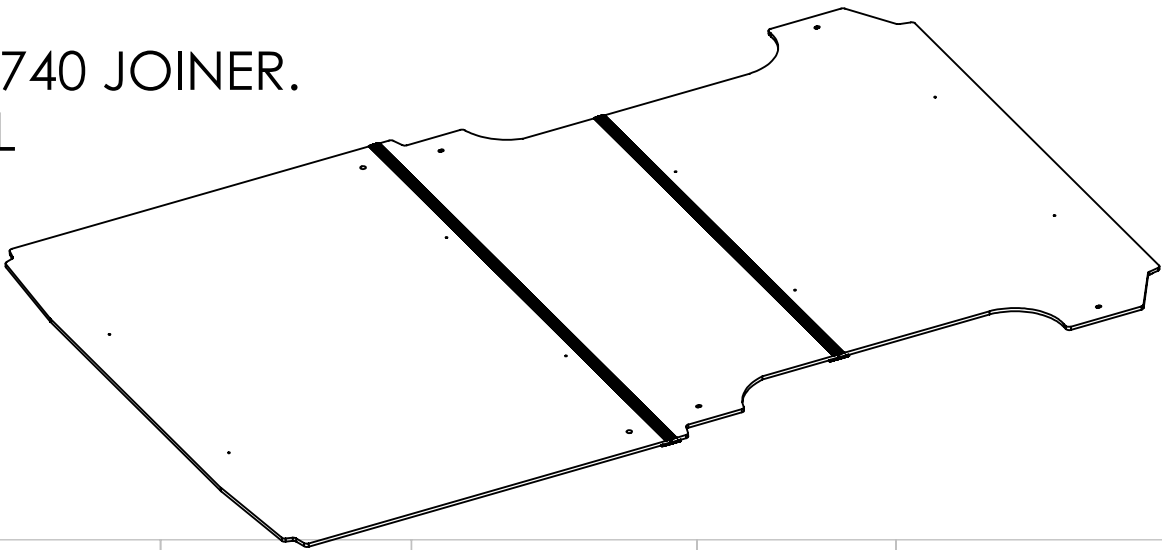


1-PLACE MIDDLE BOARD INTO POSTION AND SLIDE INTO 1404 JOINER.
ENSURE TAPER IS FACING DOWN.
2-FIT 1740 JOINER ALLOY TO FRONT OF MIDDLE BOARD.

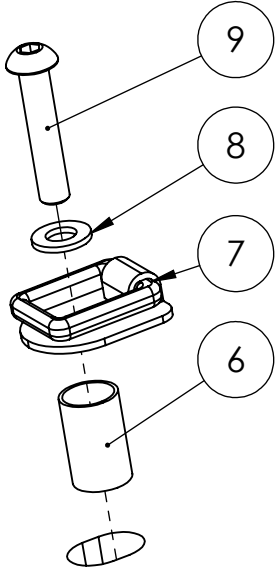
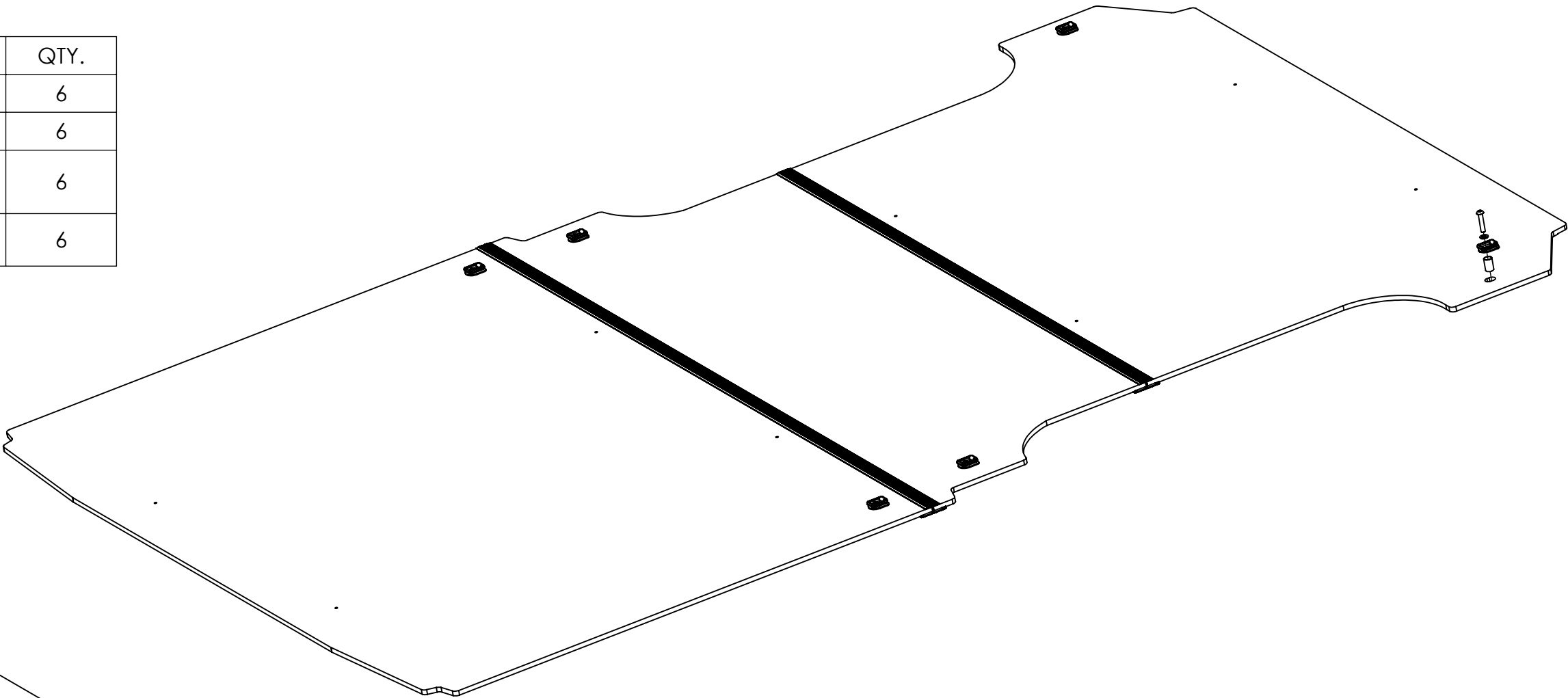




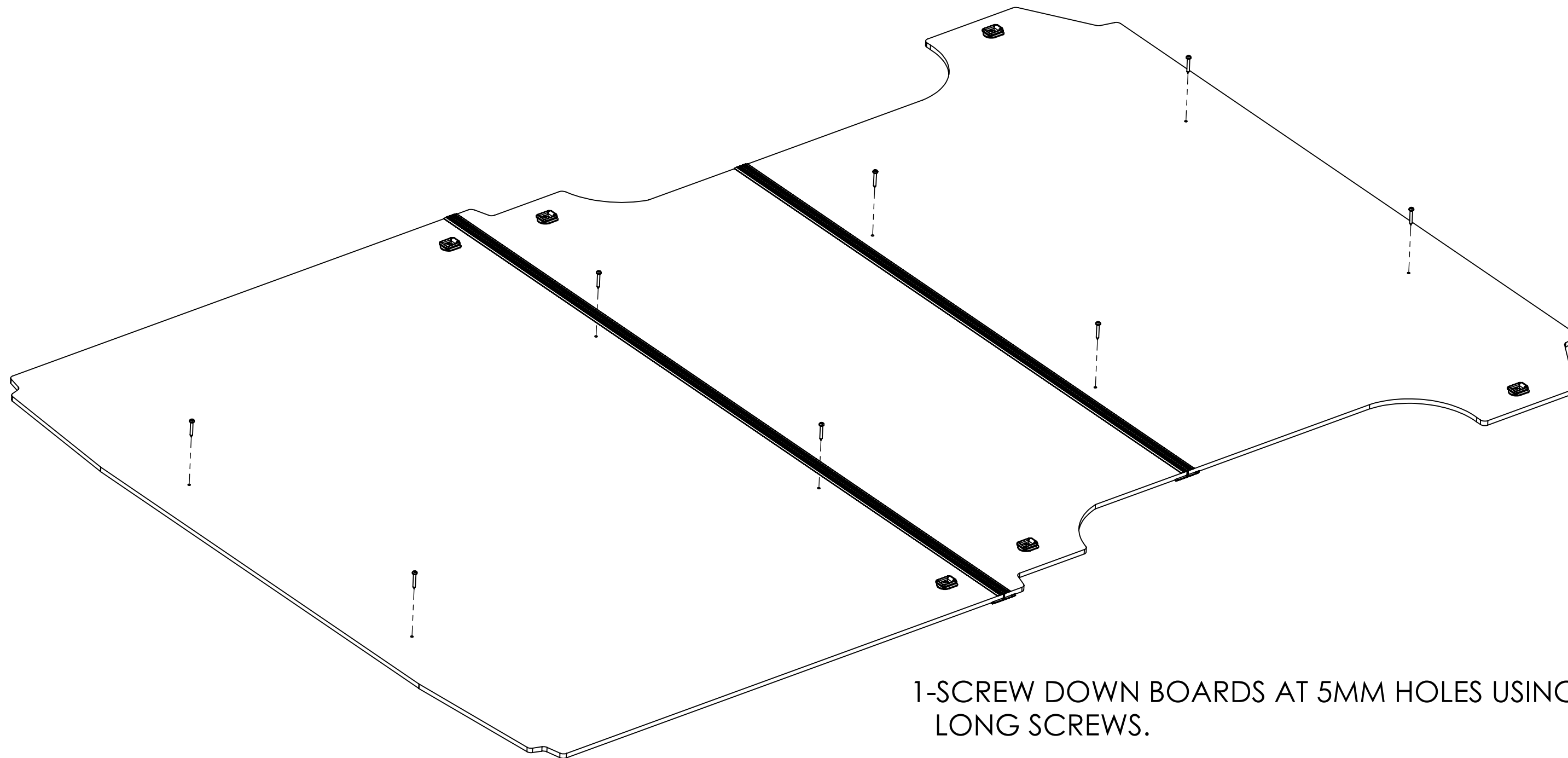
- 1-PLACE FRONT BOARD INTO VEHICLE BY SITTING REAR EDGE ON TOP OF 1740 JOINER.
- 2-LIFT FRONT EDGE OF MIDDLE PANEL AND 1740 JOINER UNTIL FRONT PANEL FALLS INTO JOINER.
- 3-LOWER JOINED PANELS TOGETHER INTO POSTION



ITEM NO.	PART NUMBER	QTY.
6	16X25MM SPACER	6
7	TIE DOWN	6
8	M8 WASHER MEDIUM	6
9	M8X60 DOME HEAD BOLT	6

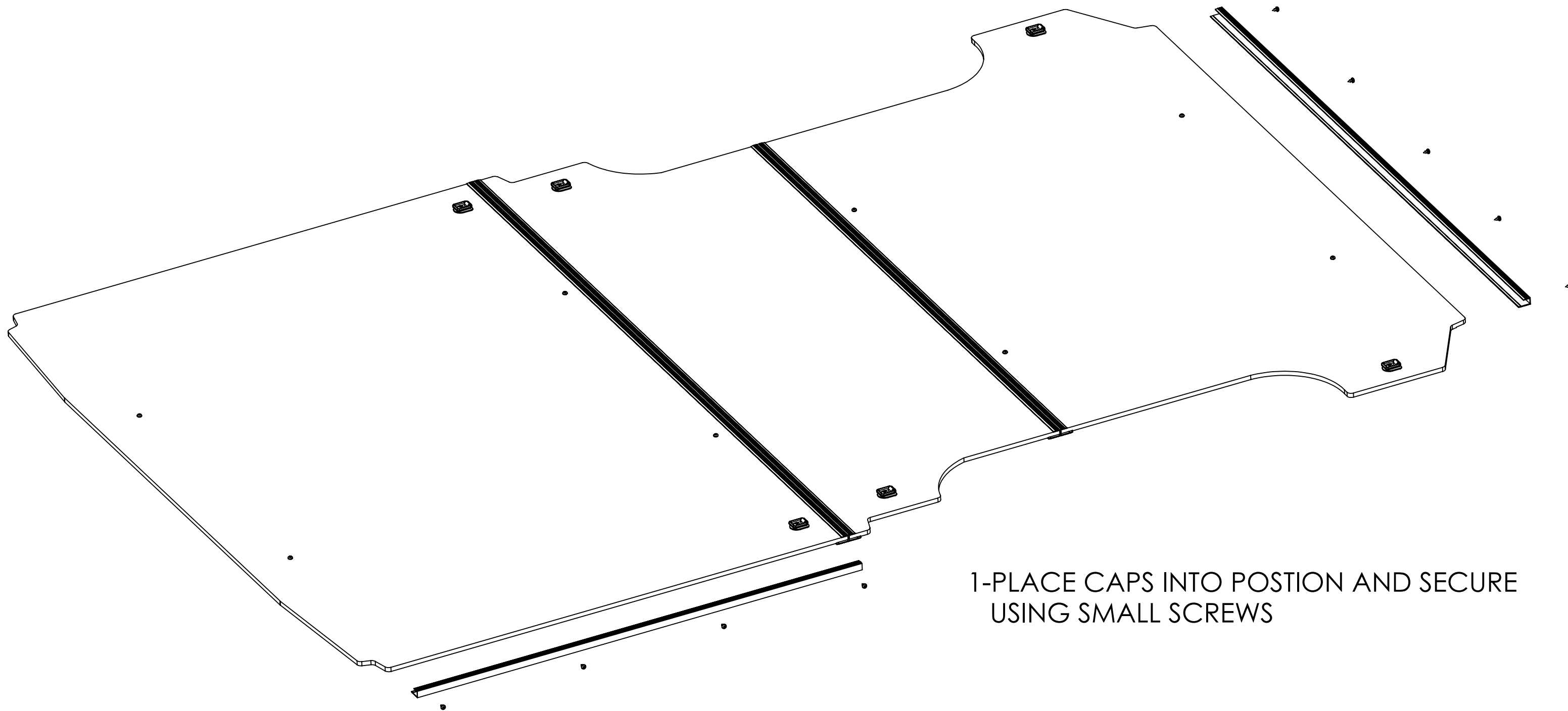


1-ALIGN ALL BOARDS WITH HOLES IN FLOOR AND WITH EACH OTHER.
2-SECURE BOARDS USING 16X25 SPACER, ORIGINAL TIE POINT, M8 WASHER
AND M8X60 DOME HEAD BOLT.



1-SCREW DOWN BOARDS AT 5MM HOLES USING LONG SCREWS.

DRAWING APPROVAL	Snr.Management:	Operations:
Filename: PTKTFMSSF18 FITTING INSTRUCTIONS STEP 05		
Vehicle MERCEDES SPRINTER SWB FWD 2018		Job no:
Material	Mass (grms) WEIGHT:	Part no:



1-PLACE CAPS INTO POSTION AND SECURE
USING SMALL SCREWS