

MAKE: LDV

MODEL: E DELIVER 7

TYPE: VAN

YEARS OF MANUFACTURE: 08/2023

PART NUMBER: SPLDVD7

POSITION: Behind 1ST Row

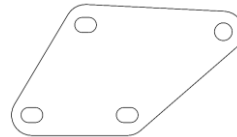


KIT:

- ☐ 2 X CBLDVED7-B-001
- ☐ 2 X SPLDVED7-B-007
- ☐ 2 X M10X30 SET SCREW
- ☐ 6 X M10X25 SET SCREW
- ☐ 2 X M10X20 SET SCREW
- ☐ 8 X M10 WHIZ NUT
- ☐ 2 X M10 PLATE ON WIRE

Window Kit

- ☐ 2.5m Adhesive Tape
- ☐ 12 x M8x16 Button Socket Screw
- ☐ 12 x M8 Nylock Nut
- ☐ 12 x M8 Rubber Washer



Your kit was packed by: _____

ALWAYS CHECK FOR FUEL LINES ETC BEFORE DRILLING AND ALWAYS USE A DRILL STOP.



VIC

25 Kalman Drive
Boronia VIC 3155 Australia

NSW

376 Hoxton Park Road
Prestons NSW 2170 Australia

Tel: 1800 FLEET FIT (353 383)
autosafe.com.au

1. Fit Perspex to partition.
2. Remove lower tie points from bottom of b pillar.



3. Place partition into position and hold in position with the help of a second person.
4. Feed M10 plate on wire through roof bow, oval opening and align with third round hole in from outside of vehicle.

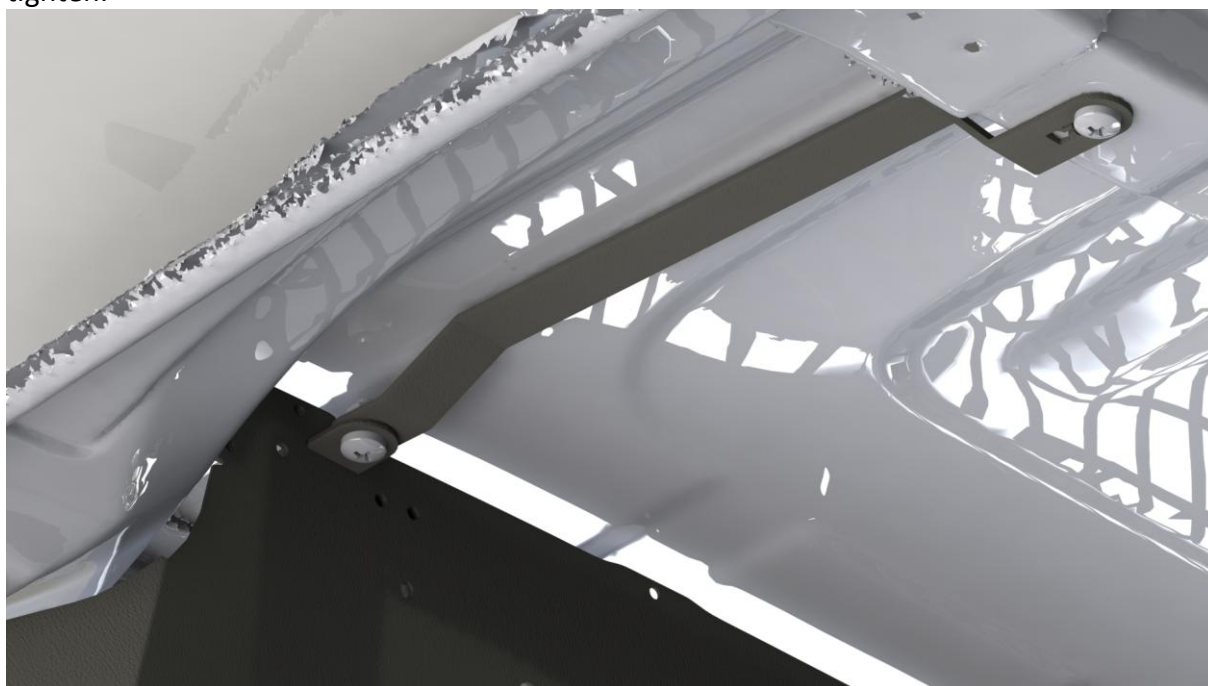


VIC
25 Kalman Drive
Boronia VIC 3155 Australia

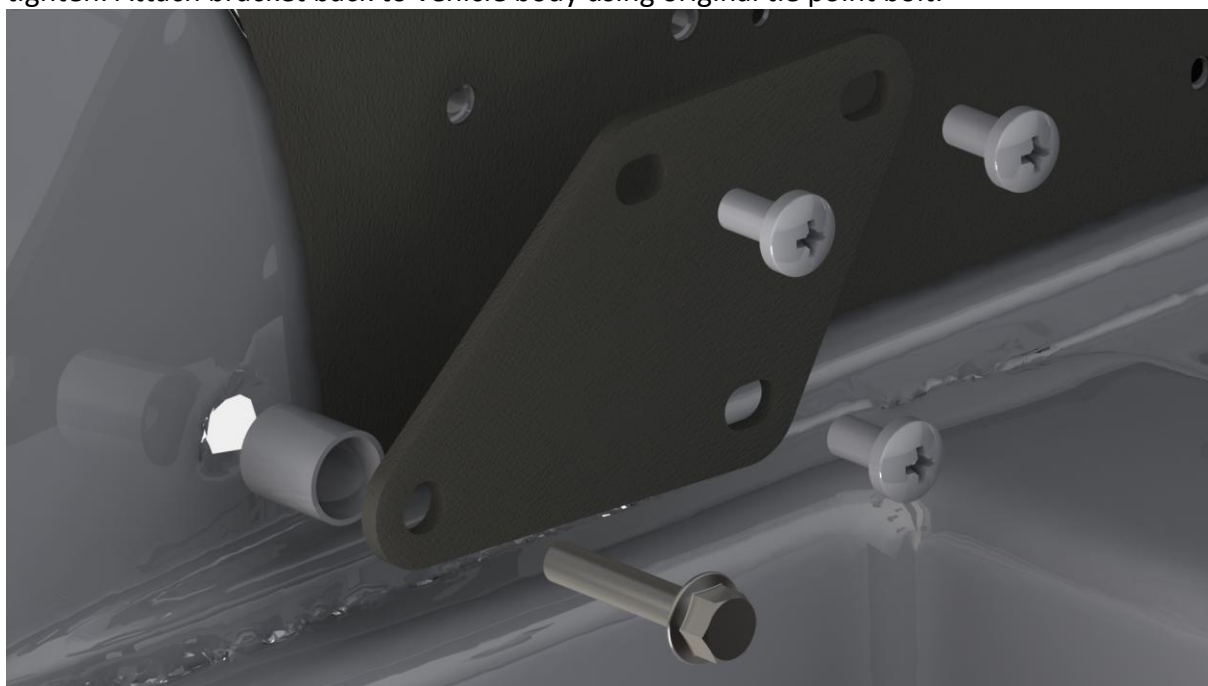
NSW
376 Hoxton Park Road
Prestons NSW 2170 Australia

Tel: 1800 FLEET FIT (353 383)
autosafe.com.au

5. Secure CBLDVED7-B-001 to roof bow using M10x30 Set screw. Secure bracket to top lug of partition using M10x20 Set screw and M10 whiz nut. Ensure brackets follow the contour of roof. Do not fully tighten.



6. Separate spacer from tie point bracket assembly and insert spacer into original hole in b post rim panel. Attach SPLDVED7-007 to partition using M10x30 Set Screw and M10 Whiz nut. Do not fully tighten. Attach bracket back to vehicle body using original tie point bolt.



VIC
25 Kalman Drive
Boronia VIC 3155 Australia

NSW
376 Hoxton Park Road
Prestons NSW 2170 Australia

Tel: 1800 FLEET FIT (353 383)
autosafe.com.au

7. Centralize partition and fully tighten all bolts.



VIC

25 Kalman Drive
Boronia VIC 3155 Australia

NSW

376 Hoxton Park Road
Prestons NSW 2170 Australia

Tel: 1800 FLEET FIT (353 383)
[autosafe.com.au](https://www.autosafe.com.au)