

MAKE: LDV

MODEL: E DELIVER 7

TYPE: VAN

YEARS OF MANUFACTURE: 08/2023

PART NUMBER: SPLDVED7HR

POSITION: Behind 1ST Row

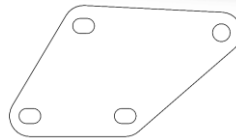


KIT:

- ☐ 1 X SPLDVED7H-001A
- ☐ 2 X CBLDVED7-B-001
- ☐ 2 X SPLDVED7-B-007
- ☐ 2 X SPLDVED7-B-002
- ☐ 2 X M10X30 SET SCREW
- ☐ 6 X M10X25 SET SCREW
- ☐ 2 X M10X20 SET SCREW
- ☐ 2 X M10 WHIZ NUT
- ☐ 10 X M6X16 DOME HEAD BOLT
- ☐ 2 X M10 PLATE ON WIRE

Window Kit

- ☐ 2.5m Adhesive Tape
- ☐ 12 x M8x16 Button Socket Screw
- ☐ 12 x M8 Nylock Nut
- ☐ 12 x M8 Rubber Washer



Your kit was packed by: _____

ALWAYS CHECK FOR FUEL LINES ETC BEFORE DRILLING AND ALWAYS USE A DRILL STOP.



VIC

25 Kalman Drive
Boronia VIC 3155 Australia

NSW

376 Hoxton Park Road
Prestons NSW 2170 Australia

Tel: 1800 FLEET FIT (353 383)
autosafe.com.au

1. Fit Perspex to partition.
2. Remove lower tie points from bottom of b pillar.



3. Place partition into position and hold in position with the help of a second person.
4. Attach CBLDVED7-B-002 to top lugs on partition with M10x20 Set Screw and M10 Whiz nut. Swing bracket outwards and mark slot against panel directly above factory hole as shown in photo. Drill point using 10MM drill bit set at a depth of 10MM.



VIC
25 Kalman Drive
Boronia VIC 3155 Australia

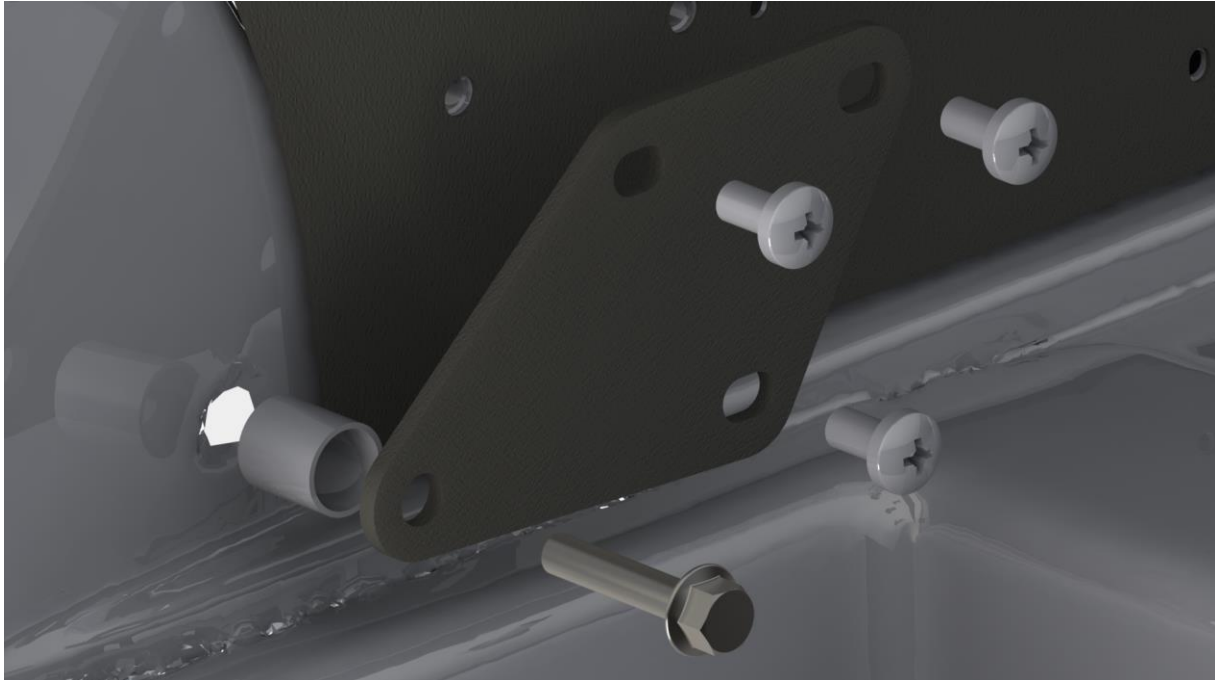
NSW
376 Hoxton Park Road
Prestons NSW 2170 Australia

Tel: 1800 FLEET FIT (353 383)
autosafe.com.au

5. Secure bracket to body using a M10x30 Set Screw and M10 Plate on wire from inside cavity.



6. Separate spacer from tie point bracket assembly and insert spacer into original hole in b post trim panel. Attach SPLDVED7-007 to partition using M10x25 Set Screw and M10 Whiz nuts. Do not fully tighten. Attach bracket back to vehicle body using original tie point bolt.

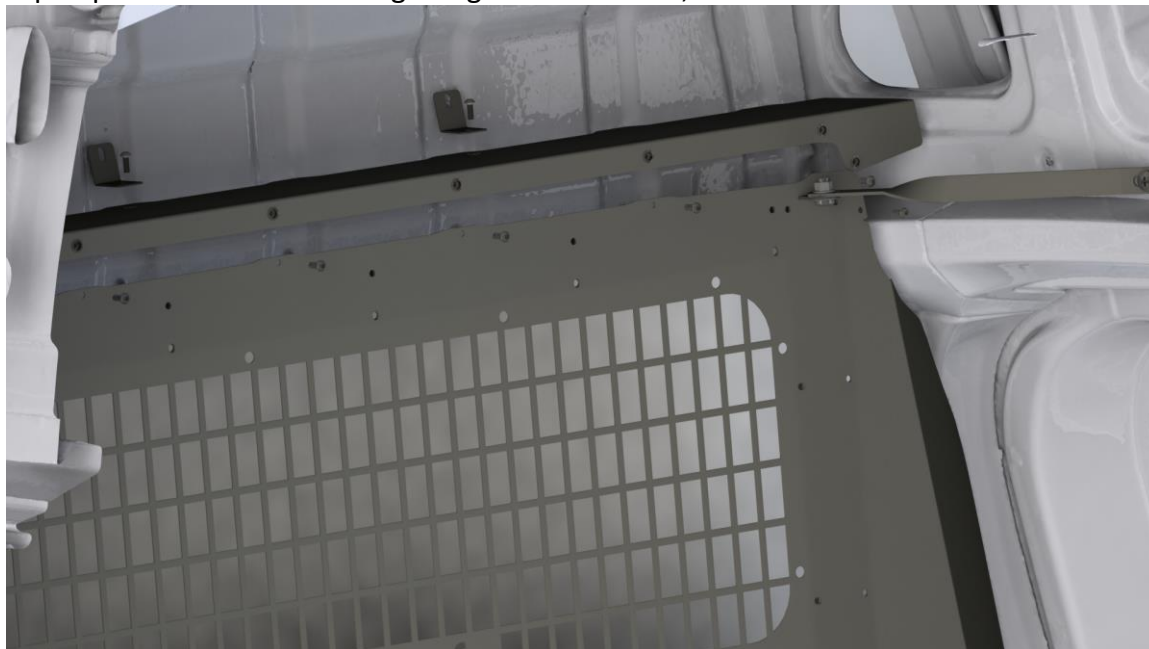


VIC
25 Kalman Drive
Boronia VIC 3155 Australia

NSW
376 Hoxton Park Road
Prestons NSW 2170 Australia

Tel: 1800 FLEET FIT (353 383)
autosafe.com.au

7. Place SPLDVED7-001A into position over partition and secure using M6x16 dome head bolts. Secure top of panel back to roof lining using SPLDVED7-002, M6x16 Dome Head bolt and factory bolt.



8. Centralize partition and fully tighten all bolts.



VIC
25 Kalman Drive
Boronia VIC 3155 Australia

NSW
376 Hoxton Park Road
Prestons NSW 2170 Australia

Tel: 1800 FLEET FIT (353 383)
autosafe.com.au